


Configuring Network Licenses on the Client PCs

Note that the instructions in this document apply to all products (example screenshots show the utility being used to select <Product Name> licenses).

Once a license server has been set up, follow this procedure on the client PCs:

1. Install the product software from the installation DVD.
2. In the Windows Notification area right-click on the **CLS** icon  and from the shortcut menu select **License Manager**.
3. On the **Server** menu, click **Search Network** to list the Sentinel RMS server(s).
4. Select the server that you wish to connect to and click **Change Active Server**.
5. Confirm that you wish to change the active server, and close the dialog.

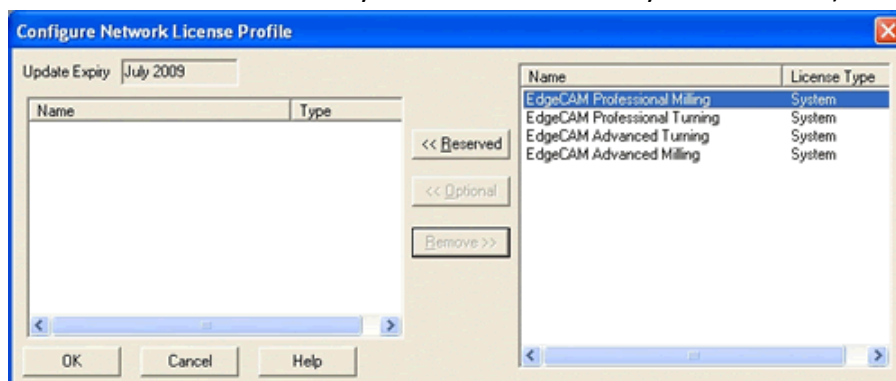
Selecting Licenses

1. To select licenses, you use the 'Configure Network Licenses' dialog.

If network licenses have not previously been selected on the PC, the Configure Network Licenses dialog will be displayed automatically. Go to Step 2.

If network licenses have previously been specified on the PC you can confirm/re-select licenses by selecting Configure **Network Licenses** from the CLS menu.

2. In the dialog, click on a system license and click **<<Reserved** to select it (the list on the left shows the licenses you have selected for your client PC.)

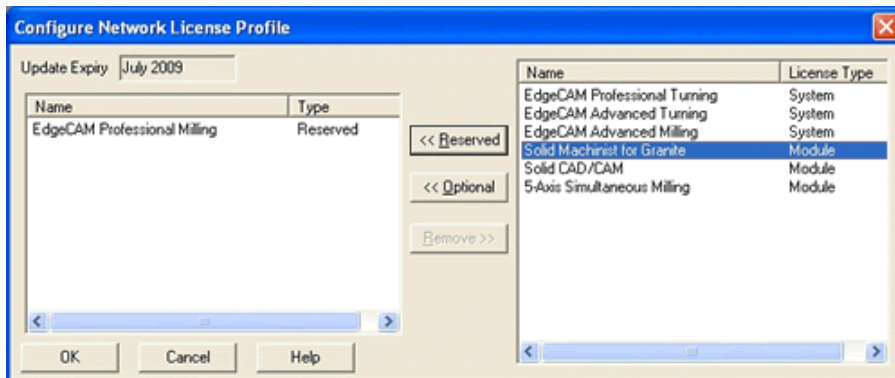


If licenses for multiple Vero brands are installed on the same network license server, any licenses for products not installed on the client PC will be displayed in grey text on the dialog.

Once you have reserved a system license, you can add another system license as **<<Optional**. In the event that the reserved license is not available, the optional system license will be used (if available).

After reserving a system license, the list on the right may show additional module licenses. You can only select a module after you have selected a system license.

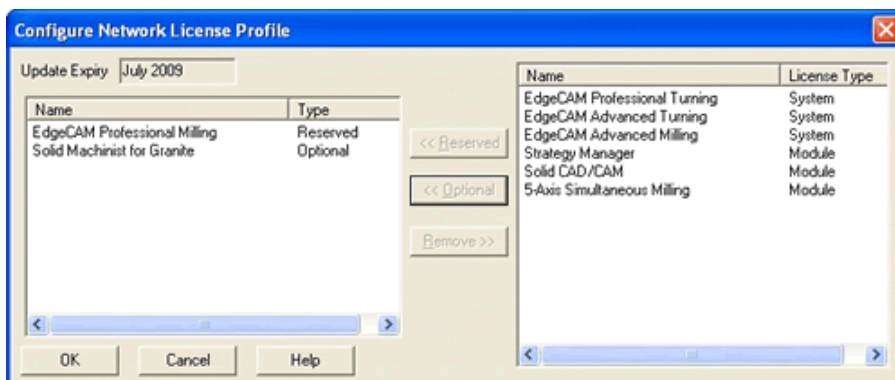
3. Click on a module license and click **<<Reserved** or **<<Optional** to select it.



If a module has been selected using the **<<Reserved** button and is unavailable at run time, the software will not start; even if the system license is available.

However, if the module has been selected using the **<<Optional** button (as in the example below) and is unavailable at run time, you will still be able to start the software (provided the system license is available.) In that case, only the functionality covered by the system license will be available for use.

The selected module is moved to the left. Repeat for other licenses, if necessary.



You can now run the software using the functionality covered by the selected licenses (seen on the left in the list above.)

Please note these licenses are only effectively 'pre-selected' for your PC. To run the software, the licenses must be available on the server at run time.