


# Remote Releasing of Licenses

'Remote releasing' allows you to remotely release a license, from an unattended PC for example. To release a license, your PC needs to have access to a shared CLS folder.

## Creating a Shared CLS Folder

The Create Share CLS Folder dialog is used to set up a share on one PC on the network (this does not have to be the PC that is running the license server), followed by configuration of all PCs that are to have access to the shared folder.

### To set up a shared CLS folder

1. On a networked PC, run `c:\Program Files (x86)\Common Files\Vero Software\<version no>\cls\CreateCLSShare.exe`.
2. Type in the name of the shared folder or click  to browse for a folder.
3. Type in the share name that will be used on the network (this will not change the name of the folder specified above).

You can hide the shared folder from users by typing '\$' as the last character of the share name. Users can map a drive to this shared folder, but they cannot see the shared folder when they browse to it in Windows Explorer or in My Computer.

4. Click **Create** to set up the share.

The shared folder is set up (all users have Read/Write permissions) and a registry file is created that can be used to configure PCs that are to have access to the shared folder.

### To set up a PC to have access to the shared CLS folder

1. In Windows Explorer or My Computer, navigate to the computer that was used to set up the share.
2. Go to the shared folder (this is the share name set up above).
3. The folder contains two registry files (for 32-bit and 64-bit operating systems respectively). Double-click the file appropriate for your PC.
4. You are prompted to confirm that you want to add the information to your registry. Click **Yes**.
5. The registry is updated and a message displayed. Click **OK** to complete the setup.
6. Repeat steps 1 to 5 on all PCs that are to have access to the shared CLS folder.

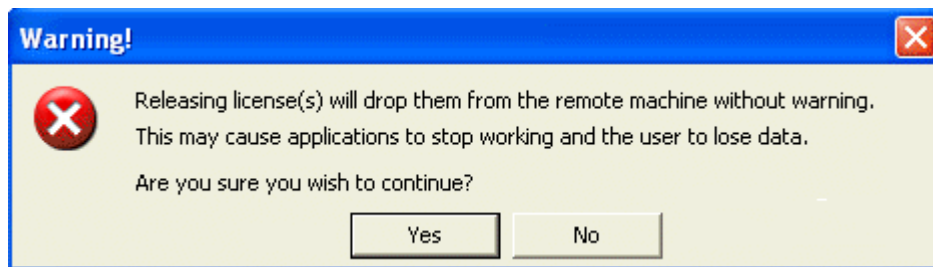
The PC can now be used to remotely release licenses from another PC, for example.

## Releasing Licenses

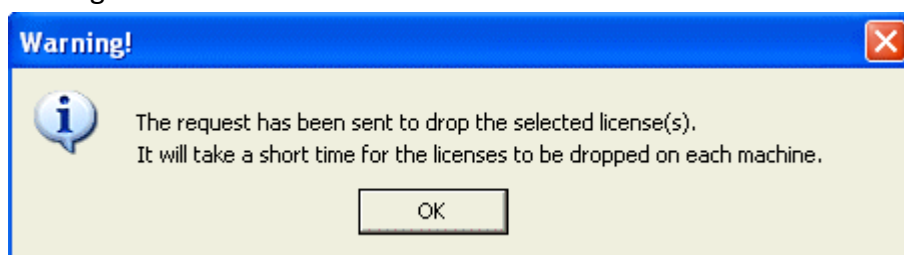
The Release License dialog is used to remotely release a license, from an unattended PC for example. It lists all licenses currently in use (including commuted licenses), as well as the user and machine running the license. To release a license, your PC needs to have access to a shared CLS folder (see previous page).

### To release a license

1. On a networked PC, run `c:\Program Files (x86)\Common Files\Vero Software\<version no>\cls\ReleaseLicense.exe`.
2. Select the license(s) you wish to release from the list. Note: Commuted licenses cannot be released remotely.
3. Click **Release License**.
4. You will see a warning message (see below). Click **Yes** to proceed.



5. A request to release licenses will be sent to the PC(s) and you will see another message. Click **OK**.



6. Click **Update List** to show an updated list of licenses in use. The license(s) you have just released will no longer be shown in the list.
7. Click **Close**.

You can now select the released license(s) using **Configure Network Licenses** on the CLS menu.