

Revoking Network Licenses

Note that the instructions in this document apply to all products; example screenshots show the utility being used to revoke <Product Name> licenses.

⚠ This procedure should only be carried out if absolutely necessary. Moving (revoking) licenses from one server to another can cause disruption to your users.

⚠ If you are using a keyed network license, ensure that the key is attached to the server.

⚠ To revoke network licenses on Windows Vista, Windows 7 and Windows 8 it is necessary to disable the User Access Control (UAC): Control Panel ► User Accounts ► Turn User Account Control On or Off.

What is license revocation?

License revocation enables product licenses to be permanently removed from one Server PC so that they can be installed on another one. Typically, this process is used when retiring a Server PC or moving some or all of the licenses to a new one in a different location. There are 2 methods for revoking network licenses.

Method 1: Using the CLS License Manager

Requirements:

- Sentinel RMS License Manager Version 8.5.1 or higher is installed on the server PC (version 8.5.3 is available on your product DVD).
- CLS 2015 or above is installed on the Server PC.
- The Server PC has an Internet connection.

Features:

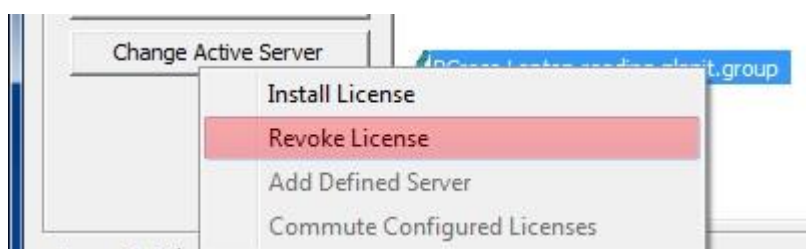
- Will revoke all of the licenses for the selected servercode automatically. To revoke individual product licenses for the selected servercode, use Method 2.
- If licenses for multiple Vero products are installed on the server under different servercodes, only the licenses for the selected servercode will be revoked.
- Licenses cannot be revoked if any of them are in use.
- This method can only be used via CLS on the Server PC.

⚠ This procedure can only be carried out if the requirements listed above are met.

⚠ Once the licenses have been revoked from a server, the original license file cannot be used on it again.

To revoke the licenses using Method 1

1. Ensure any unexpired commuted licenses are checked in.
2. Run the CLS License Manager. To do this, run Windows Explorer and browse to the C:\Program Files (x86)\Common Files\Vero Software\<version>\CLS, for example, C:\Program Files (x86)\Common Files\Vero Software\2016.10\CLS and double-click **licenses.exe**.
3. In the dialog displayed, select the servercode from the drop-down list, right-click on the active server and select the **Revoke License** option from the menu. Select the **Automatic revocation** option on the dialog that is displayed and then the **Next** button to activate the license revocation.



4. At the end of the revocation process, a success confirmation message will be displayed. Close the message and the licenses will no longer be listed by License Manager.
5. The process is now complete and, using the same servercode, you can activate the license on another Server PC. Configure the client PCs to use the new server (remembering to update the **lshost** file to reference the IP address or name of the new server).

Method 2: Manually revoking network licenses

Requirements:

- Access to the WlmAdmin.exe file on either the Server PC or a Client PC (refer to the procedural instructions below on how to locate WlmAdmin.exe).

Features:

- Can be done from any PC that can 'see' the Sentinel RMS License Manager.
- Can revoke individual product licenses.
- Licenses cannot be revoked if any of them are in use.
- This process generates 'LMrevocationticket' files. You submit these to your supplier, who will then return the new keyfile for the new Server PC to you once it has been confirmed that the licenses have been revoked successfully.

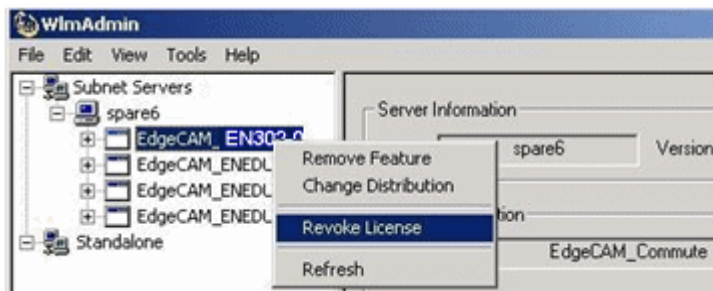
 **Once the licenses have been revoked from a server, the original license file cannot be used on it again.**

To revoke the licenses using Method 2

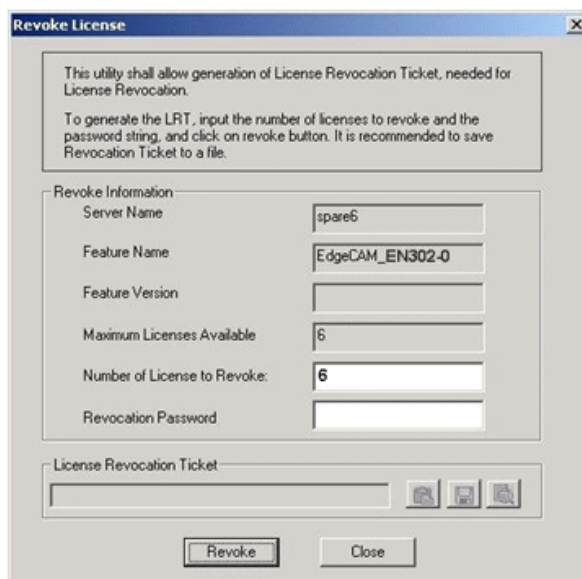
1. Ensure any unexpired commuted licenses are checked in.
2. You now start to generate the 'revocation password', for later use.
From the installation DVD, run the file:
`\Sentinel RMS Licensing\Administer and Monitor\wlmadmin.exe`
3. In the window that opens, click **Tools** menu ► **Generate Revocation Password**.
4. Into the **Password** box, type **revoke123** and click **Generate**.
For the Location specify the folder:
<OS Drive Letter>:\ Program Files (x86)\Common Files\SafeNet Sentinel\Sentinel RMS License Manager\WinNT


(Note this path may differ under a non-English operating system language.)
5. Click **Save**.
In your specified folder, you will now have the file `sntlpassword.dat`, which needs to be present for the revoke to succeed.
6. Now that the password is generated you can start to revoke the licenses.
7. Run **wlmadmin.exe** again.

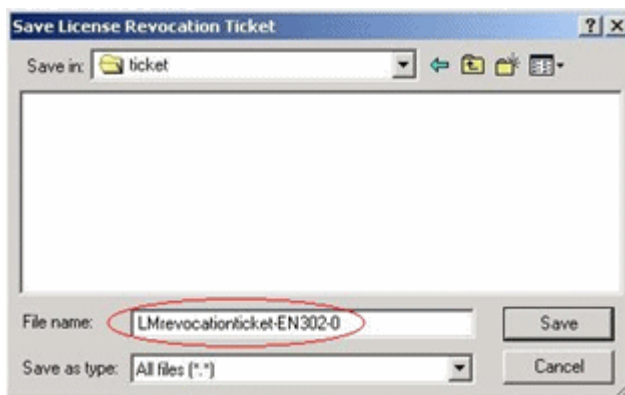
8. In the **Subnet Servers** list expand your server to see its licenses. Right-click on a license and on the shortcut menu, click **Revoke License**.



9. In the dialog that opens, enter the **Revocation Password** of **revoke123** that you generated earlier. Set **Number of Licenses to Revoke** to the number of licenses.



10. Click **Revoke** and click **Yes** in the confirmation dialog.
11. Click **Save** . In the Save dialog, to the end of the 'File name', add the name of the license you are revoking and click **Save**.



12. If you look in WlmAdmin you will now see that the license is still listed but the total number of licenses is set to 0.

Right-click on the license, as in step 8, and, on the shortcut menu that opens, click **Remove Feature**.

13. Repeat steps 8 to 12 for every license.
14. Send the saved LMrevocationticket files to your supplier. You could also include a lock code for the new server.
15. On receiving the keyfile for the new server, repeat the server installation process on the new Server PC. Configure the client PCs to use the new server (remembering to update the **lshost** file to reference the IP address or name of the new server).