



Server Setup

This document refers to the initial setup of Sentinel RMS network licensing. If you are updating your network licenses following an annual maintenance renewal or after purchasing additional software modules, please refer to the document ***network_UpdateLicenseFile.pdf***.

 **The Sentinel RMS License Server must not be installed on a virtual server if you are using keyless licensing. Sentinel RMS network licenses can only be installed on virtual servers provided they are locked to a SafeNet Computer ID USB key.**

 **If you are using a keyed network license, ensure that the key is attached to the server.**

To set up the server

1. Install the Sentinel RMS Server from the \Sentinel RMS Licensing\License Manager Installation folder on your DVD.
2. We recommend that you copy the installation files onto the server to save you looking for the DVD in the future.


To install the license file

There are two methods of installing the license file on the server:

- From CLS menu ► **License Manager**. *Note that this option cannot be used for the installation of redundant license files.*
- From WlmAdmin.exe

Option 1 – Using the License Manager

You can install the licenses on the license server from a CLS that is installed on either the server or a client PC (with Administrator Mode enabled).

1. Right-click on the CLS icon  and from the shortcut menu, select **License Manager**.
2. On the **Server** menu, click **Search Network** to list the Sentinel RMS server(s). Select the server you wish to connect to and click **Change Active Server**. Confirm that you wish to change the active server, and close the dialog.
3. Select your chosen server in the list and click the **Install License** button.
4. In the dialog that opens, you have the option to request your license file over the Internet or Browse to a file that you have already downloaded or received by email.

To request a license file over the Internet

1. Type in or copy-and-paste your **Servercode**.
2. Click **Request License File** to request a license file from the Vero server over the Internet. Click **Next**.
3. In the license activation dialog, check the details are correctly displayed and click **Next**.
4. In the confirmation dialog, click **Finish** to install the new license file.

To install a file that has been sent to you

1. Type in or copy-and-paste your **Servercode**.
2. Click **Use License File**.
3. Browse for and select the license file (the license file will be named <servercode>.one, i.e. 1234-4567-1234-4567-1234-4567.one for example).
4. Click **Next**.
5. In the confirmation dialog, click **Finish** to complete the installation.

Your licenses are now installed and ready to use.

Note that network licenses cannot be revoked using the License Manager.

Option 2 – Using WlmAdmin.exe

1. The first step is to generate the lock code for the server. From your installation DVD, run the file:

\Sentinel RMS Licensing\Generate Lock Code**GenerateLockCode.exe**

Note the lock code in the dialog that opens. Alternatively click **Save** to save to a file.

2. You now need to obtain a license keyfile by submitting your lock code online.

Follow the link on your delivery note. Your servercode and customer ID will automatically be displayed. Type or paste in your lock code, optionally add your email address and then click **Generate License**. Go to step 4.

3. If you are a returning customer and we already have your lock code on file you can go directly to www.verosoftware.com/licenceactivation.

Type or paste in your lock code and click **Next**.

(If your lock code cannot be found click **Enter Additional Customer Information** to proceed. Enter your **Customer ID** and **Servercode** - both can be found in your delivery note - and the **Lock Code**.)

Click **Generate License**.

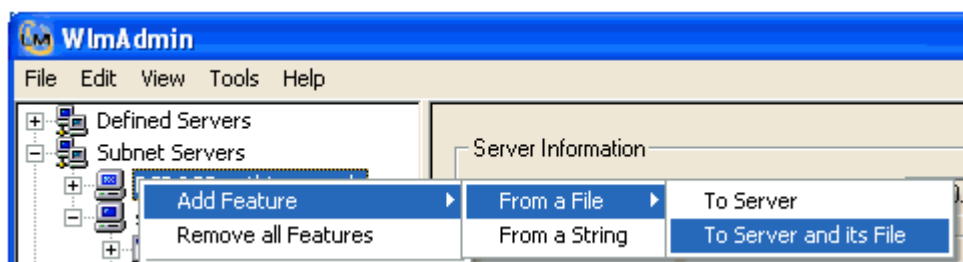
Once you have generated the license, a new page will be displayed, containing a link for downloading the keyfile. If you have provided your email address (in step 1) the keyfile will also be supplied as an email attachment.

4. Save the keyfile. **Note** that you can only use the keyfile on the server on which you generated the lock code.

5. From your installation DVD, run the file:

\Sentinel RMS Licensing\Administer and Monitor\wlmadmin.exe

6. In the dialog that opens, under Subnet Servers select your server. Right-click and select **Add Features ► From a File ► To Server and its File**.



Note: Product licenses are referred to as 'features' in Sentinel RMS™.

7. Browse for your saved keyfile, select it and click **OK**.

Click **OK** on the confirmation dialog for each license that is displayed.

This completes the server and license installation.